



Dear Future Tilikum Guest,

We invite you to come and experience the hospitality, service, and peaceful setting at Tilikum. We are nestled among the hazelnut orchards and hillside vineyards of the Willamette Valley. Since 1971, we've offered quality programs and retreat facilities. We are the ideal setting for your next church retreat, business meeting, family reunion, or school outing.

Tilikum exists to produce Christ-centered change in the lives of our guests. It is our hope that Tilikum continues to be a place where people of all ages and walks of life can come, lay down the distractions of every day, and experience the peace of God. We want to help facilitate this type of experience for all our guests. Our staff are available to assist your needs, answer questions, and field concerns throughout the retreat planning and the event itself.

This packet is designed to introduce you to our facilities, grounds, and recreation options. We are certain that you will find amenities that will fit your specific needs and group dynamics; whether your interest lies in our motel-style Retreat Center, our rustic Northridge tent site, our recreational building, or our beautiful grounds. Tilikum has many unique features that are designed to enhance your stay:

- ◆ Quiet natural setting, located on 92-acres
- ◆ Beautiful 15-acre lake
- ◆ Comfortable Retreat Center accommodating up to 58 guests.
- ◆ Close proximity to downtown Portland and Salem (45 minutes)
- ◆ Quality food service, specializing in traditional "Tilikum" recipes

If you are interested in booking our facilities, or would like to check availability, do not hesitate to contact us at (503)538-2763 or [tilikum@georgefox.edu](mailto:tilikum@georgefox.edu). Tilikum holds a special place in many people's hearts, due to its unique amenities and peaceful God-centered atmosphere. It is our hope that we will have the pleasure to serve your group.

Warm Blessings,

Tilikum Staff

Enclosures

# Our Beginnings

---

## ...The Columbus Day Storm, October 12, 1962

Tilikum is the result of one family's faithfulness to God.

Russell Baker was born on March 21, 1908, to Ida and Harry Baker, who owned a dairy farm in the Chehalem Valley. Eventually Russell bought this farm, and it caused him to seek out his personal values and God's purpose for his farming life.

On October 12, 1962, the Columbus Day storm blew through western Oregon with hurricane-force winds. The Baker farm was hit especially hard. Irene Baker, Russell's wife, watched from the house as the storm reduced the dairy barn and silo to rubble. The Baker's estimated losses were \$40,000-\$50,000—with no insurance to cover wind damage.

Russell thought he was financially finished. He wrote, "In meditating on what to do, I felt led to make a vow or covenant with the Lord...if He would bring me out of this mess, I would not only give a large part, but all." In the next few years, Russell did recover from the storm damage, and according to his promise, he began to look for ways to use his farm for God's work.



In 1968, Russell sold some of his property and purchased a tractor to use in developing the lake. In 1970, the Bakers donated the newly formed 15-acre lake, their new home, a barn, and the remaining 77 acres of the original Baker farm to the Northwest Yearly Meeting of Friends Churches. Ownership was later transferred to George Fox University. The Bakers stipulated that "the property be primarily used for the purpose of religious training, camping, education, fellowship and related activities, which are to be used on an interdenominational basis to the extent possible."

Today, Tilikum serves thousands of guests each year through the retreat center, summer camp programs, challenge course, Road Scholars (formerly Elderhostel), and other sponsored programs and activities.

The Bakers were modest farmers who chose to give everything to God's work. Through their faithfulness, many lives have been touched and blessed. It is in this spirit that we welcome our guests. It is our hope that you will experience a renewed sense of God's presence and direction in your life.

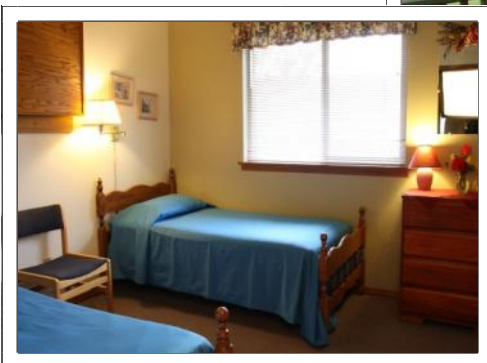
# Illahee Retreat Center

---

**The Retreat Center, or Baker's Illahee**, is the ideal setting for your next church, school, or organizational retreat. Our spacious meeting rooms provide ample opportunities for workshops, discussions, and small-group sessions. Dining, lodging and meeting rooms are all located in the comfortable retreat center with easy access to the lake and grounds. Day use and overnight options are available.

## Features

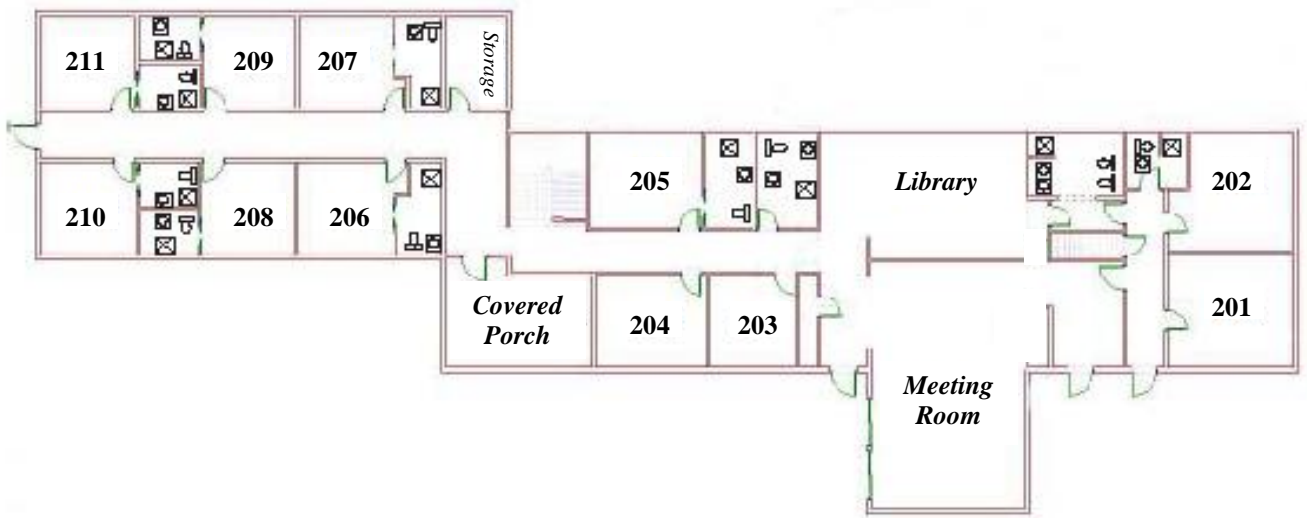
- ◆ Overnight lodging for up to 58 guests in 18 rooms (twin beds in rooms including some with bunk beds). We have 13 rooms with private baths; other rooms have designated bathrooms across the hall.
- ◆ Two spacious meeting rooms:
  - ◆ Each room can be set up to your specifications, including tables and chairs.
  - ◆ Larger room (downstairs) seats 60 guests; smaller meeting room (upstairs) seats 30.
  - ◆ AV equipment available includes: TV, DVD, flipcharts/dry erase boards, overhead projector and podium. LCD projector and sound system may be available upon request and are limited.
  - ◆ Meeting rooms and dining area are equipped with air conditioning. All lodging and meeting rooms are equipped with individual heat controls.
- ◆ Library and sitting area can accommodate breakout sessions or other retreat activities.
- ◆ Telephones are located in the retreat center; fax machine and photocopier can be accessed in Tilikum's main office.
- ◆ Wireless internet is available in the meeting and dining rooms of the Retreat Center.
- ◆ Full linen service can be provided upon request.
- ◆ Game room with antique pool table and foosball.
- ◆ Deck and gazebo overlooking the Chehalem Valley. Accessible from lower level.



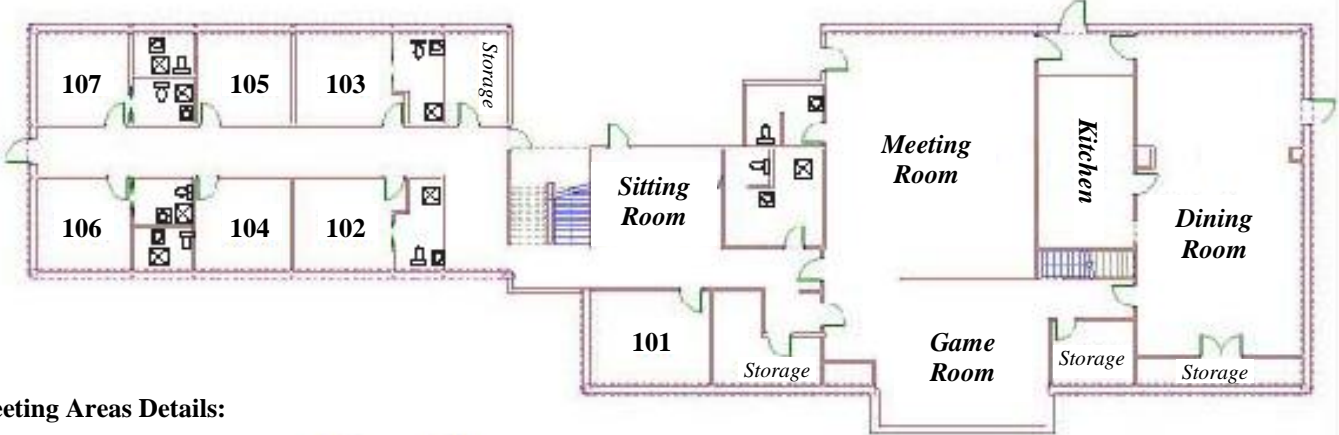


# Illahee Retreat Center Layout

## Upper Level



## Lower Level



### Meeting Areas Details:

- Upper Meeting Room (20' x 30') - seats 30  
Includes: Piano, TV, DVD, overhead projector
- Lower Meeting room (28' x 32') - seats 60  
Includes: Piano, TV, VCR, DVD, overhead projector, and small sound system with cordless microphone  
Available for either rooms: LCD display projector (upon request)
- Additional Small Group areas: Library, Sitting Room

### Sleeping Rooms:

- Rooms 102-107 & 205-2011 sleep up to three in single (twin) beds (1 single is an upper Pullman-style bunk bed) and include private baths.
- Room 101 sleeps up to three in single beds (91 single upper) with private bath across the hall.
- Rooms 201 and 202 sleep up to 5 in single beds (2 single uppers & 1 single) with private baths next door.
- Rooms 203 and 204 each sleep up to three in single beds (1 single upper) and share a common bath across the hall.

# Tilikum Retreat Center Housing Chart

## Lower Level

<b>101**</b>	
Single	
Lower Bunk	
Upper Bunk	
<b>103</b>	
Single	
Single	
Upper Bunk	
<b>105</b>	
Single	
Single	
Upper Bunk	
<b>107</b>	
Single	
Single	
Upper Bunk	

<b>102</b>	
Single	
Single	
Upper Bunk	
<b>104</b>	
Single	
Single	
Upper Bunk	
<b>106</b>	
Single	
Single	
Upper Bunk	

## Upper Level

<b>201**</b>	
Single	
Lower Bunk	
Upper Bunk	
Lower Bunk	
Upper Bunk	
<b>203*</b>	
Single	
Lower Bunk	
Upper Bunk	
<b>205</b>	
Single	
Lower Bunk	
Upper Bunk	
<b>207</b>	
Single	
Single	
Upper Bunk	
<b>209</b>	
Single	
Single	
Bunk	
<b>211</b>	
Single	
Single	
Upper Bunk	

<b>202**</b>	
Single	
Lower Bunk	
Upper Bunk	
Lower Bunk	
Upper Bunk	
<b>204*</b>	
Single	
Lower Bunk	
Upper Bunk	
<b>206</b>	
Single	
Single	
Upper Bunk	
<b>208</b>	
Single	
Single	
Upper Bunk	
<b>210</b>	
Single	
Single	
Upper Bunk	

\* Share common bathroom

\*\* Private bathroom located next to room

# Fawver Center

---

## Fawver Center

Designed after an Indian longhouse, the Fawver Center is a multi-purpose building situated at the east end of Tilikum's lake.

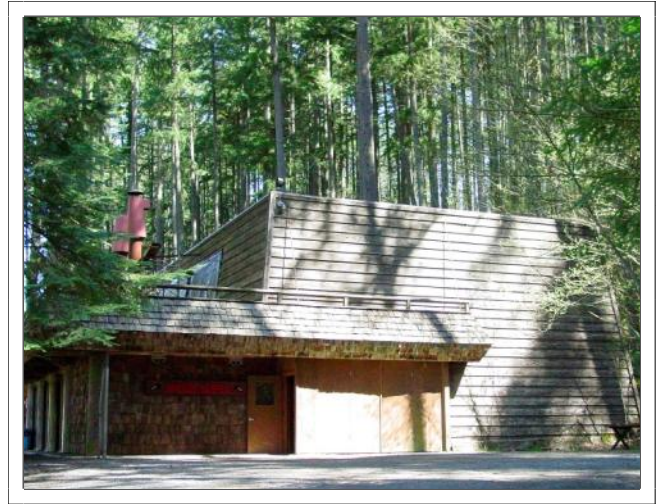
The Fawver Center can be rented exclusively or as a part of a grounds use group rental. It may also be available at no additional charge in combination with Retreat Center rentals.

Its rustic lakeside setting and expansive space appeals to outdoor education groups, harvest/thematic parties, and family reunions, as well as providing an indoor room for challenge course groups.

Summer availability is limited to weekends due to our high volume of camp programs.

### Features:

- ◆ Basketball/Volleyball court
- ◆ Projection screen
- ◆ Food prep area
- ◆ Indoor fire pits
- ◆ Bathroom facilities
- ◆ Cafeteria-style table seating for 100
- ◆ BBQ
- ◆ Outdoor campfire area
- ◆ Access to fishing dock & canoe landing
- ◆ Nearby parking for large groups & bus turnaround
- ◆ 25' Climbing Wall (*additional charges apply*)



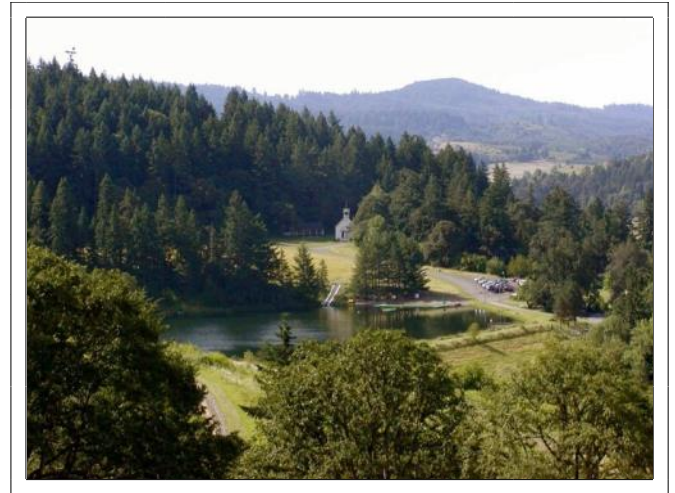
# Recreation & Grounds

---

## Grounds Use

While Tilikum's 92-acre grounds are not available to the general public, group rentals are available for a small day use fee. Our grounds could be the ideal location for your next church/corporate picnic, family reunion, school field trip, or birthday party. Rental of the grounds gives your participants access to:

- ◆ Over three miles of hiking trails
- ◆ Treehouse and Bouldering Wall
- ◆ Waterfront activities (Swimming/Canoeing)
- ◆ Restored 1909 one room Schoolhouse
- ◆ Barn and farm animals
- ◆ Campfire area
- ◆ Fishing on our private 15-acre lake (no license required; Tilikum encourages catch & release)
- ◆ Our multipurpose building, the Fawver Center, can be included at an additional charge. Summer availability is limited due to our high volume of program campers.



## Recreation

The following recreation options can be combined with your stay at an additional charge. Please let us know if you are interested in any of these and we'll provide you with further details.

- ◆ Canoeing/Swimming
- ◆ High/Low Challenge Course
- ◆ The Big Swing



# Northridge & Carden Lodge

---

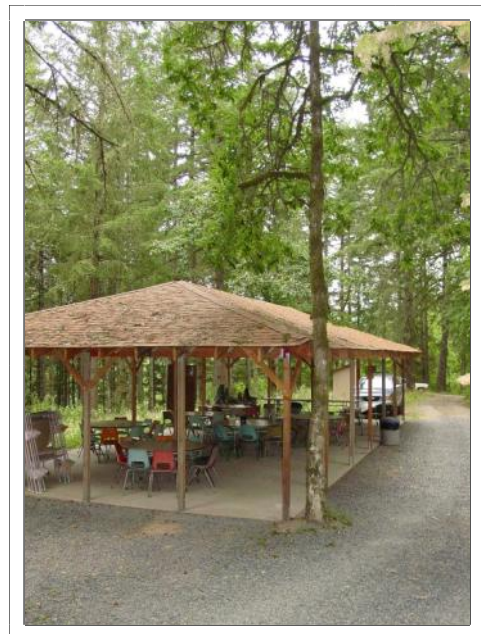
**Northridge**, a perfect option for groups interested in a rustic, old fashioned camping experience. The site invites guests to enjoy a roaring outdoor campfire, a game of horseshoes, or the beauty of the surrounding woods. The Northridge site is ideal for youth groups, adventurous adults, outdoor education programs, and scouting troops. This site is generally available from May 1st to October 31.

## Features

- ◆ Seven platform tents, eight bunks with mattresses in each (56 beds)
- ◆ Carden Lodge—covered area for meeting space and meals (includes tables and chairs)
- ◆ Running water
- ◆ Flush toilets (outhouse style)
- ◆ Refrigerator
- ◆ Microwave
- ◆ Coffeemaker
- ◆ Campfire amphitheatre
- ◆ Carpetball
- ◆ Horseshoes
- ◆ Foosball Table
- ◆ Volleyball

## General information

- ◆ \$10.00/person/night
- ◆ Discounts available for multiple nights and groups over 30
- ◆ Includes exclusive use of Northridge.  
(Availability of grounds, Fawver Center and waterfront use depend upon other groups on-site, please inquire at time of signing contract to secure for your group).



## Meals are not included in prices:

- ◆ Camp-style cooking recommended.
- ◆ Bring your own camp stove and/or BBQ (one small BBQ is available).
- ◆ Catered meals available from Tilikum's food service department at an additional cost.  
(Package pricing available for groups interested in combining Northridge rental with catered meals.)





# Challenge Course

---

Located in an impressive stand of 100-year old Douglas fir trees, Tilikum's Challenge Course is a collection of ropes, cables, wooden beams and logs assembled for individual and team development.

These 'elements' are placed anywhere from ground level to 123 feet up in the trees. A new addition to the course is our 700 foot giant zipline over the lake!

Your group will learn by doing, and through the process of experience, discover your potential for growth in the areas of:

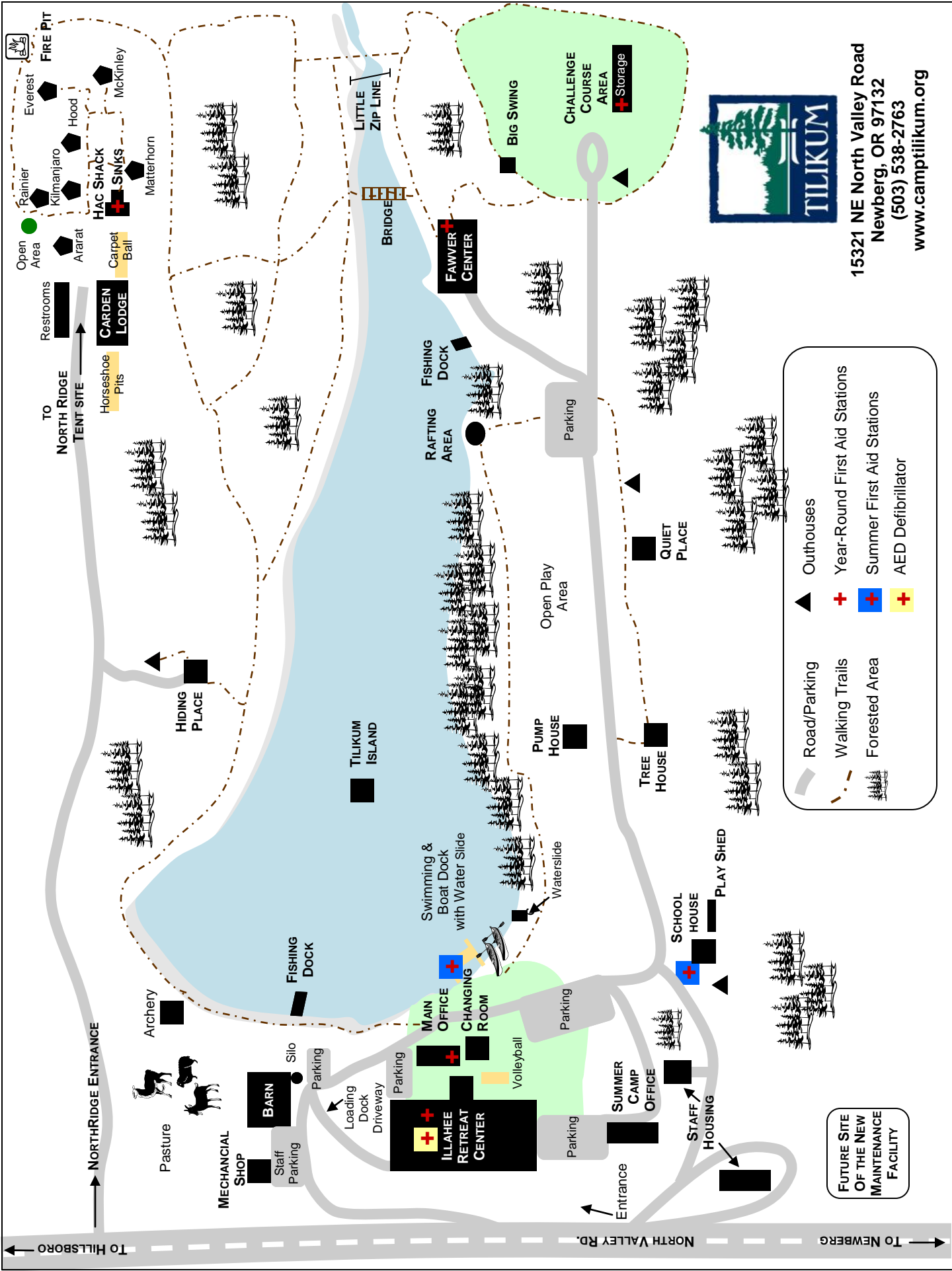
- ◆ Teamwork
- ◆ Problem Solving
- ◆ Communication
- ◆ Trust
- ◆ Self-esteem
- ◆ Confidence
- ◆ Cooperation
- ◆ Encouragement
- ◆ Leadership Identification
- ◆ Leadership Development



Your customized experience may include games, initiatives, low elements that focus on group trust and teamwork, or high elements designed to challenge individuals and groups within a controlled risk environment. Our indoor facility, held inside the Fawver Center, also allows us to run year-round programs. Participants on the high elements are required to wear harnesses and helmets and are connected to a pulley system. All Challenge Course activities are designed and presented with a great consideration for your psychological, emotional, and physical safety.

Our course was originally built by Project Adventure, Inc. and is currently maintained by Synergo. Each facilitator is carefully trained for leadership and safety on the Challenge Course to provide your group the highest quality experiential adventure program. Contact Carol Yard, Program Director at [cyard@georgefox.edu](mailto:cyard@georgefox.edu) today schedule your Challenge Course adventure!

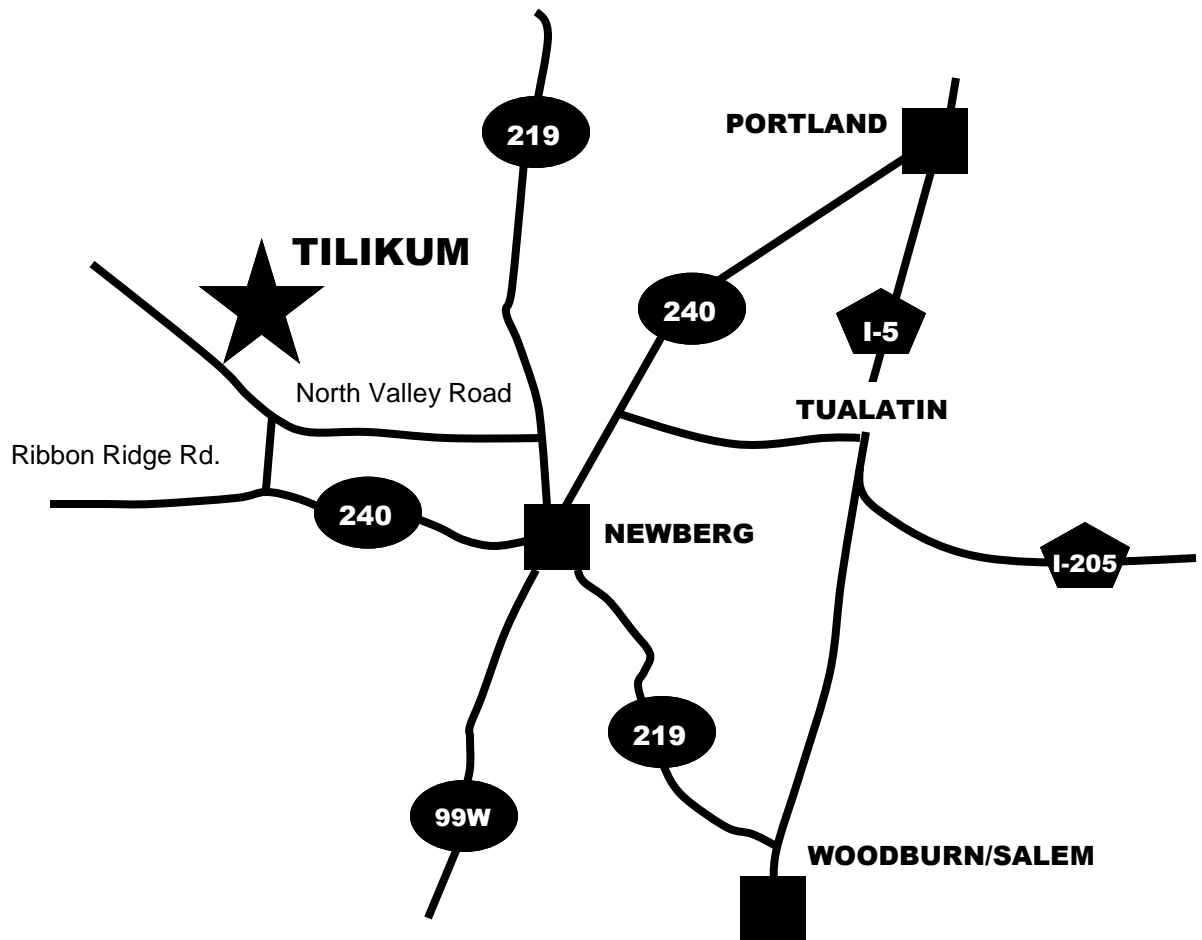




15321 NE North Valley Road  
 Newberg, OR 97132  
 (503) 538-2763  
[www.camptilikum.org](http://www.camptilikum.org)

	Road/Parking		Outhouses
	Walking Trails		Year-Round First Aid Stations
	Forested Area		Summer First Aid Stations
			AED Defibrillator

FUTURE SITE  
 OF THE NEW  
 MAINTENANCE  
 FACILITY



**Directions to Tilikum...**

**From the North on I-5:** Head south on I-5. Take exit 389 toward Tualatin/Sherwood. Turn right at SW Nyberg St. Slight left at SW Tualatin Sherwood Rd. Turn left at OR-99W S (heading toward Newberg). Turn right at OR-240 W/N Main Street in Newberg. Turn right at NE Ribbon Ridge Rd. Slight left at NE North Valley Rd. We are on the right side, follow the paved driveway to the left.

**From the South on I-5:** Head north on I-5. Take exit 278 Donald/Aurora. Turn left at Ehlen Rd NE/Fargo Rd NE, continue for 7 miles on Ehlen Rd which merges into Yergen Rd NE and McKay Rd NE. Turn right at OR-219 N/River Rd NE, continue approximately 3 miles into Newberg, turning left onto State Route 99W South. Turn right at OR-240 W/N Main Street. Go 5.4 miles and turn right onto NE Ribbon Ridge Rd. Slight left at NE North Valley Rd. We are on the right side, follow the paved driveway to the left.

**From Newberg:** Heading west (toward McMinnville/Ocean Beaches), turn right at OR-240 W/N Main Street. Go 5.4 miles and turn right onto NE Ribbon Ridge Rd. Slight left at NE North Valley Rd. We are on the right side, follow the paved driveway to the left.

**From Forest Grove:** Head west on Pacific Ave toward Council St. Turn left at the 1st cross street onto B Street. Turn right at OR-47 S/State Hwy 47 S/Tualatin Valley Hwy (signs for Yamhill/McMinnville), continue for approximately 7 miles. Turn left at NE Flett Rd (follow this same road approximately 5 miles to Tilikum’s entrance, even though it will change it’s name three times). Turn right at NE Spring Hill Rd., which later merges into NE North Valley Rd. We are on the left side, follow the paved driveway to the left.

**From McMinnville:** Take Hwy 99W toward Newberg. After entering Lafayette, turn left onto Bridge Street, which becomes Abbey Road. Follow Abbey Road past the Trappist Abbey and bear right at the junction with Hendricks Road, where Abbey Road become Kuehne Road. Continue to the stop sign then turn right off of Kuehne Road onto Hwy 240 and proceed 0.7 miles to Ribbon Ridge Road. Slight left at NE North Valley Rd. We are on the right side, follow the paved driveway to the left.